



FAIR HAVEN
FREE REFORMED RETIREMENT VILLAGE



2010

NEWSLETTER

from the CHAIRMAN

It is a year ago that you received a glossy Newsletter about the activities of the Fair Haven Association – the real name is Free Reformed Retirement Village Association (Inc.) – which runs the Retirement Village and Fair Haven Hostel. One of the reasons that the previous one was published was the opening of the new wing to the hostel. This opening could have been performed with a lot of fanfare but it was decided to keep it ‘low key’. The hostel has a wonderful, peaceful setting where our elderly brothers and sisters enjoy their company with each other and the care extended to them by dedicated staff. To have an official opening with many people visiting and wandering

around the hostel would have been too intrusive and too overwhelming for many of the residents. For that reason, the Board decided at the time to publish a Newsletter.

We are already so used to the name Fair Haven that we might forget why this name was proposed and chosen. In Acts 27:8 we read the following: “Passing it with difficulty, we came to a place called Fair Havens, near the city of Lasea”. The apostle Paul was on his way to Rome when they sailed, in pretty rough weather, along the south of the island Crete and arrived at a small harbour called Fair Havens. While there, Paul warned that they should stay there for the time being for, he said: “I perceive that this

CONTENTS

From the Chairman	1
From the Treasurer	3
Future Planning Committee	5
Reflections	5
Entering the Village	7
From the 1984 Chairman	8
Public Open Space	10
Membership Form	12
The Board & Staff	12

“Let us not get used to the blessings we receive so abundantly from our God but let us be thankful that He provides so well for all His children, young and old”



Hanna-Lee Kampman,
one of the carers,
with Mr W vanderSchaaf

voyage will end with disaster and much loss". The owner of the ship and the centurion disagreed and they left and you know the rest of the story. For our elderly, needy brothers and sisters, Fair Haven is a wonderful resting place at the end of an often tumultuous life. It is a peaceful place where we also may look forward to our journey to our final destination when our Saviour is calling us unto Him.

During the month of June we remembered that twenty five years ago the first stone was laid for Fair Haven Hostel by Rev Dr S.G. Hur. It was a humble but very special

beginning and we can marvel at God's great love and care over the hostel and the village since. The chairman at the time, Br S.C. Fokkema, will reminisce about the early days. We started with a small hostel – four rooms for residents and a few other areas – and also four units which were soon occupied. Compare it with what we have now and we are astounded at God's grace that so many brothers and sisters can be cared for. To Him alone be the honour! To commemorate this historical event the Board has decided to publish another Newsletter in which you are informed of some historical data and present planning and developments.

With thankfulness to our God, the Board has been able to do its task. There are many aspects that require our attention, not in the least finding ways and means to accommodate those whose name(s) are on the waiting list for a unit in the village. Three new units have been built and occupied along Pine Tree Close, just outside the gate. Be assured, the occupants are not outcasts but belong to the community of village residents for the full hundred percent!

We have been able to purchase 22b Haynes Court, situated next to the village. Br and Sr A. van Leeuwen have moved in. This means that some rooms in the new wing of the hostel are

free, and are, as from halfway July, occupied by Mr and Mrs R. Vermeulen from Albany. The Board has decided to use this section of the new wing again for this purpose because we still have a considerable number of rooms unoccupied in the hostel. It should be remembered, however, that if this section is needed for hostel residents then it must be vacated within reasonable time.

We just received a positive response from the Armadale City authorities regarding our request to build four new units on the present premises. Our God has really blessed our endeavours. Final plans will be submitted and quotes for building will be asked. The Lord willing, quite a few brothers and sisters will receive a new abode, hopefully within a year.

Elsewhere in this Newsletter you will read some information about our wish to purchase some Public Open Space (POS) between the village and Sixty Street. We are thankful for the good support we receive from various professionals within our churches to purchase and to try to obtain property. To acquire POS is a difficult and tedious activity.

Finally, a Future Planning Committee has been active behind the scene for a number of weeks already and their first obvious submission has found

many pigeon holes in our church community. Please, follow up the request of the brothers to provide them with the information they need. The Board has requested the Committee to present a report of their findings by the end of this year.

While the brothers and sisters in the village units are still able to care for themselves, they know that support from the hostel is available. What a beautiful place the hostel is! Whenever you walk through the passages you experience peace and serenity. Some walk around and have a friendly word for you; others push their rollator or seat walker and often go for a stroll outside when the weather is fine; others enjoy their room and its comfort. The daily physical activities in the morning followed by a coffee break are enjoyed by all. There is the opportunity to do some craft or to listen to reading by a volunteer in the library. The highlight, however, is the evening devotion where our God is praised with songs, Bible reading and prayer. It would be greatly appreciated if more family members or office bearers are willing to take a turn in leading one of the devotions. Please, be so kind to inform our Care Manager, Sr D. VanderWal, if and when you are available.

The chairman and
vice chairman of the Board



FAIR HAVEN

FREE REFORMED RETIREMENT VILLAGE



From the TREASURER

It is now 25 years ago that the hostel was opened for the benefit of the ageing brothers and sisters of our churches in Australia. It is a gift from God. We have had the privilege of looking after not only those from the metro churches but also from Albany and Tasmania.

It is heartening to see the support Fair Haven receives from the communion of saints. This is evident not only in the regular member contributions but also in the donations and gifts from both young and old.

Initially weekly contributions in 1985 were \$2.00. The rate changed to \$3.00 in 1989 and in the 1990's to \$6.00. Today the weekly membership contribution is \$7.00.

It is always difficult to budget for the running of the hostel as we cannot always be certain of the number of residents who will occupy the various rooms. Under the capable management of our administrator, Br J. Versluis, Fair Haven has a healthy budget. While we budget and plan we are ultimately dependent on the Lord for His provision and pray for His continued blessing in providing for the care for our elderly brothers and sisters in the Lord.

We encourage anyone who is not yet a member of our association, and would like to be, to contact us and we will gladly issue you with a member number. On the last page of this Newsletter is a form you may complete.

■ Mrs J.E. Numan

What is a hostel or a village without dedicated staff? Loving care is given to the needy brothers and sisters; nutritious meals are prepared and enjoyed; the rooms and passage ways are kept clean and proper; the grounds around the precinct are neat and well looked after; and faithful attention is paid to the running of everything. It is good and proper to extend a heartfelt thank-you to all those who are involved.

We see many relatives visit their (grand)father or (grand) mother, who is residing in the hostel, regularly. This close family relationship is so precious and so necessary. Love extended by children and grandchildren is not only crucial but also a Scriptural requirement. It should be remembered that the care to be extended to parents in their

old age is in the first place a duty and responsibility for the close family. The association has been established to support the families, not to replace them. We notice every time again that eyes light up when a visitor enters a room or even walks through the front door. We pray that these visits will continue and that every family member understands his or her responsibility. Some extra care, even during meal times, would be of great benefit to maintain that personal bond.

Our heavenly Father blesses us richly with this wonderful institution of care. So many brothers and sisters have been helped during these past twenty five years. They came and still come from Albany, Tasmania and the metro area. How wonderful it is to show our love to so many within our churches! God has also provided us with the financial means to continue and even expand this

work. He works in the hearts of governments to support Fair Haven so abundantly. He also has ensured that so many association members support this work financially so that extra building activities can be pursued. May this financial support also continue.

Above all, Fair Haven needs prayerful support, not only from family members or association members but from the whole church community. Let us not get used to the blessings we receive so abundantly from our God but let us be thankful that He provides so well for all His children, young and old. This Newsletter will be placed in every pigeon hole in every congregation so that everyone may express their joy and gratitude to our Triune God.

To Him be the glory! Soli Deo Gloria!

■ Mr G.M. Spyker

Mr Numan,
our only centenarian



Fair Haven

FUTURE PLANNING COMMITTEE

At a meeting in April this year several comments were made regarding the need for planning for the future. Planning for the inevitable increase in the number of people who would like to, or need to, make use of the fine facilities provided by Fair Haven. How are we going to be able to provide suitable accommodation for our elderly brothers and sisters? Are we making the best use of the land and other resources that God has so graciously provided to Fair Haven and the Free Reformed Churches of Australia?

In response to the valid points raised at this meeting, the Board has appointed four brothers to study the matter further. The four brothers are Br G.J. Kleyn (convenor), Br H. Houweling (representative

of the Board), Br E. Heerema and Br O. de Snoo. So far this committee has met several times and work has begun.

The committee aims to study the demands that will be placed on Fair Haven as the number of older people in our community grows. Part of this study will involve looking at the various options available at the current Pine Tree Close site and also the possibilities and opportunities that other locations may provide.

To help the committee with its work a questionnaire has been issued to all brothers and sisters within our churches who are 60 years old and over. This questionnaire hopes to find out what aged care accommodation and facilities people would like to have available to them as and

when they require them. The thoughts, feedback and ideas that the older members of our congregations have on these matters will be invaluable in the future planning process.

If you have received a questionnaire in the post we urge you to put pen to paper, complete the questionnaire and return it to the committee. If you have not received your questionnaire or would like to offer your advice please contact Br H. Houweling and he will be happy to send one out to you.

The committee plans, the Lord willing, to complete its work by the end of this year and present the findings of its studies as a report to the Fair Haven Board.

■ Mr O. de Snoo

REFLECTIONS

When looking back on 25 years "Fair Haven", one realises that 25 years is a generation. When in the late seventies and early eighties the migrant settlers in the Armadale area became very senior, the thought of establishing a Free Reformed Village became a reality.

I remember the meetings leading up to the decision to buy land after finding some willing brothers to advance the necessary finance. Half of the 6 acre block was sold to P. Bosveld and other church members were willing to purchase unit sites in advance. In this way, no loan was

required. Soon after, the first units were built and under the blessing of the Lord, the plan became a reality.

Already earlier the reason of buying land was also for the purpose of building a hostel for those church members who were unable to look after themselves anymore. Why should we build a hostel at Fair Haven as well? The reason was that, although there were other senior nursing homes in the region, it was not desirable to have our frail aged parents in these nursing homes. Many of the pioneers were unable to speak English

very well and the Reformed faith was foreign in these nursing homes. So the first section of the hostel was built and officially opened on 15th June 1985. The Lord was praised for His goodness and blessings to provide a home for the grandparents to be cared for.

And so under God's blessings the village was built up with more units as the demand dictated. We now have a full village with some 15 units, two gazebos for relaxation and the hostel expanded from the initial 5 rooms to the present hostel with entry foyer and meeting hall. The hostel is fully equipped with a modern kitchen and laundry and trained staff.

In order to obtain Government subsidies, the hostel was to be accredited in accordance with the requirements of the Aged Care Act 1997. Many hours were spent on writing policies and procedures, and numerous meetings were held. The Pitlo's will also recall when the first 'two days' accreditation visit took place in 1998. We were all awaiting the outcome nervously. But with much gratitude to the Lord we passed the test and were accredited. But even today, after many accreditation visits, it is still always a tense period for the Fair Haven staff and a relief when it is all over and positively reported.

And now, we are village residents ourselves. We too have become grandparents and even great

grandparents. During the earlier days, we did not think about living at Fair Haven. But as time goes on, and through our association with the village and the work of the Board the Fair Haven Village had become very close to our heart, it was not a difficult decision to place our name on the list for future consideration of residing here.

We have now lived here for some 18 months and have never regretted the move. The independence of the village residents is of paramount importance. But also the security and if help is required, it is only a call away. Every unit dweller is free to come and go. If we are away on holidays for some time, you may need to ask someone to water your plants and empty your mailbox. And there is always someone willing to help.

Then we have a Happy Folks Club of which most village residents are members. For only \$5.00 per month/person we save up to go for a coffee and cake somewhere or have a luncheon. Every last Friday of the month we enjoy our carpet bowling morning in the Gong. All the participants are very competitive and full of enthusiasm participating in the competition. You see: at the end of the year, at the final luncheon for the season, a Trophy is provided! Then we receive a monthly Newsletter (Managing Editor Sr H. Wagenaar) with a monthly editorial. Through the Newsletter we are brought up to date with all the weal and woe of the village residents, their holiday adventures, photos of events, birthdays

Three new units along Pine Tree Close just outside the village



and anniversaries. And not to be forgotten: the puzzles and other brainteasers.

All in all, it is good to live here and especially because we live here as brothers and sisters in the Lord, expecting all things from His Fatherly Hand. And reflecting back, we clearly see God's rich blessings upon the 25 years of the Retirement Village. He is using the members of the Church to support and to use His gifts.

*Bless the Lord, all His works,
in all places of His dominion.*

Bless the Lord, O my soul! (Psalm 103:22)

■ Mr A. van Leeuwen



How to enter the RETIREMENT VILLAGE

It seems that many members, in particular elderly ones, do not know exactly the rules to lease a unit in the Retirement Village at Pine Tree Close. It also seems that many are reluctant to place their name(s) on the waiting list. Some of the reasons mentioned are: "We are not ready for it" or "It is not for me" or "We are too young to move into the village".

We have no intention to argue with personal feelings and opinions. The village has been established for the benefit of brothers and sisters in our Free Reformed Churches community who appreciate special support and care when needed. The village is a place where peace and thankfulness are evident every day.

Step 1:

You must place your name on the waiting list. That can be done by approaching the Administrator who will provide you with a form to be completed by you. The completed form will be kept in the office. If there are already, say, seven names on the list then you will be number eight.

Step 2:

When a unit becomes available, the first name on the list will be approached by the administrator in the presence of the chairman of the Board. If he/she decides not to take up the offer, the second name on the list will be approached, and so on, till someone is found who will move into the vacant unit. The date that the offer was declined will be noted on the original form together with the signatures of the administrator and the chairman. At the Board meeting of 6-12-2006 it was decided *'that those members who decline the offer of a unit twice will be placed on the bottom of the list'*.

Step 3:

The Board also resolved that *'preference will be given to those of 70 years and older'*. In case of an emergency admission you could be asked to miss out on a unit without being penalised for you have not declined an offer.

Step 4:

Upon leasing a unit within the Pine Tree Close village, an amount of \$150,000 is payable as the lease premium before the unit is occupied.

With respect to larger units that are or may be purchased by the association, a larger lease premium will be determined by the Board.

Step 5:

Rules regarding the retention of the lease premium over the years are available at the office. The administrator is willing to explain these rules to you.

Step 6:

When the lease is terminated, the remaining lease premium will be paid into your estate.

It should be remembered that all units are owned by the association. However, there are some that have been leased under a different leasing agreement. These leases will be paid out by the association when they become available. There are set rules regarding the payout of these leases.

It is not necessary to postpone your enrolment when the opportunity is there to enjoy Christian fellowship with those around you.

Please, feel free to contact the administrator, Br J. Versluis, on 9399 7173.

From the 1984 CHAIRMAN

It is with great pleasure that I provide a brief history of Fair Haven in the 25th year of the blessings of the Lord for the care of our aged brothers and sisters.

Twenty five years ago on Saturday 15th June the first stage of the hostel was officially opened by Rev Dr S.G. Hur, then minister of the church of Kelmscott. At the time there were just two congregations in the Perth Metropolitan region, Armadale and Kelmscott.

Preceding this joyful day much work had been done by the committee and various other volunteers.

Where did it all begin? It all began in the late 1970s when some of the older Free Reformed migrants who came out in the 1950s were beginning to wonder what would happen

if they became frail and could not care for themselves any longer due to the advancing years. Would they be placed in an environment where the Christian faith was not the basis of their care? It is often fraught with dangers to mention people by name for fear of missing out on other worthy contributors; however, I do need to mention two in particular: Br P. Postmus, and Br A. Slobbe. There may have been others but these brothers stand out most in my mind as being the most persistent driving forces to try to generate interest to begin to plan for the future needs.

Their efforts ultimately led to a meeting being called by the Deacons of Armadale in April 1981. I well recall Br Arnold Pleiter, a deacon, phoning me to urge me to attend the meeting.

He feared that interest was not high and so drummed up as many as he could to attend. I had not intended to be there, but at his urging I decided to do so. With God's blessing the meeting was the turning point and a steering committee was appointed in order to explore the possibilities for the eventual construction of a frail aged home. That meeting began for me a long and happy time as chairman of the steering committee and later of the association committee. The steering committee appointed were the brothers J. Reitsema, T. DeVos (secretary), and S. Fokkema (chairman).

Many meetings were held, often every week, until midnight, and many aspects were looked into. In order to gain better insight several visits to aged persons developments



Mrs Sibum, resident for more than 8 years

were made on Saturdays. One of the first considerations was to acquire a parcel of land in a location close to the Armadale centre. The overall approach was to build a hostel with about 10 self funded retirement units. The finance plan was that the unit owners would put up their share of the land purchase on the basis that they could build a retirement unit at some point in the future if they required. It was put together as an investment with a reasonable rate of interest if the share in the land was not personally required. This plan would make it possible to purchase a good size parcel of land for a village concept to be developed over time where private units and a hostel could be built. Several parcels were looked at and finally a parcel in Dale Road was selected as being in the right location of a

good size and the price, though a challenge, with good support was achievable.

In March 1982 twelve months after being appointed, the steering committee presented an eight page report titled: "*Our Care for the Aged*", to the members of the two churches. This report recommended – and the meeting agreed – to the concept village plan and agreed to purchase the land in Dale Road. After the meeting, when the owners of the land were approached again, they substantially increased the asking price of the land, making this proposal financially unachievable.

The search for affordable land continued. Some time later Br A. Pleiter found another parcel of 6 acres of land between Haynes Court, and Sixty Street. The land was not "on the market" but could be available at the right price of around \$55,000. This was of great interest to the committee, but to raise such a large amount was seen as insurmountable. A plan was devised to subdivide the land into two parcels of 3 acres, to sell one of the 3 acre lots at a small profit, and to fund the balance from donations and prospective unit owners.

It was at this stage of recommending a realistic land purchase plan that a need to form an incorporated association became necessary. The steering committee had

done its job and now there was a need to move on. So it was that on 10th May 1982 at a meeting of church members, called by the Deacons of Armadale, that the Free Reformed Retirement Village Association was formed. The meeting also agreed to the land purchase plan. There were a few voices that called for the retention of the full 6 acres as the need in future would grow and we would run out of land. How true those prophesies were! However at the time while there was a will to retain the 6 acres there was no ability to finance that desire. Today we can learn from that with benefit of hindsight.

The members of the first association committee were the brothers J. Postmus, J. Reitsema, T. DeVos, R. Posthuma and S. Fokkema (chairman).

The next 12 months saw much work to building the first four units and the hostel. The building contract was let to Sinma Constructions in April 1984 after a public tender process; the total project, including internal roads services and all buildings, would cost a sum of approximately \$153,000. That shows what inflation we have experienced in just 25 years! A modest loan was negotiated with the bank at 13.5% interest. The balance was contributed by donations and pledges; the unit owners paid in full for

the construction cost of their units. Of special note is the fact that the consistories of Armadale, Kelmscott, Albany and Launceston all agreed to hold regular collections in the worship services in order to support the loan repayments for the hostel! The consistories clearly saw their task in this project. The youth clubs and men's and women's clubs donated as well. We had a group of volunteers collect paper and glass every month and sell it to raise money. It was a wonderful united effort by so many. By the end of 1984 the amount raised was \$45,871. At that time this was

an amazing amount of money collected in one year. It is a testimony for the work of the Lord in our midst, to move members to work shoulder to shoulder for this wonderful cause.

Much volunteer work was performed by many, and many trades people had tendered for work to the builder for only the cost of materials. The honorary supervisor on behalf of the association was Br J. Mulder. The contract went smoothly under his professional expertise and all was completed and by April 2005 we could welcome our first residents.

The first resident in the hostel was Mrs Versluis of Albany, and the first hostel supervisor was Sr T. Jongeling. The first unit residents were Sr Posthuma unit 1, Br and Sr Zuidema unit 2, Sr Reitsema unit 3, and Br and Sr Westra unit 4.

The official opening was on Saturday 15 June 1985 on a bright sunny winter's day. Many attended and gave testimony to the mercy of the Lord. Prayers of thanks were offered to the Lord that this was at last a reality.

■ Mr S.C. Fokkema

PUBLIC OPEN SPACE

In early 2009 a formal application was lodged with the City of Armadale requesting rezoning over part of the parkland reserve that adjoins the Fairhaven Retirement Village and also fronts Pine Tree Close and Sixty Street. The north-west corner of this public reserve is somewhat tucked away and enclosed on three sides by rear fencing, and hence as a reserve this land is not so attractive and useable for the public. A design has been undertaken to show how this portion of land could be added to the retirement village and would allow for the construction of ten (10) additional housing units, with a central driveway

connecting back into the main part of the village. Five of these housing units would address the remaining public park, and there would be semi-permeable fencing to allow for security but also to allow for overlooking the parkland.

To satisfy Council Planners it was necessary to do extensive work to justify the proposal in the context of Council's wider public open space strategy. It was necessary to demonstrate that reducing the public open space area of this particular park would not have an overall detrimental impact on the wider locality. Ultimately, Council's Planning Staff did not view the proposal that favourably

and were going to recommend against the proposal, primarily on the basis that they was no real benefit to the wider community.

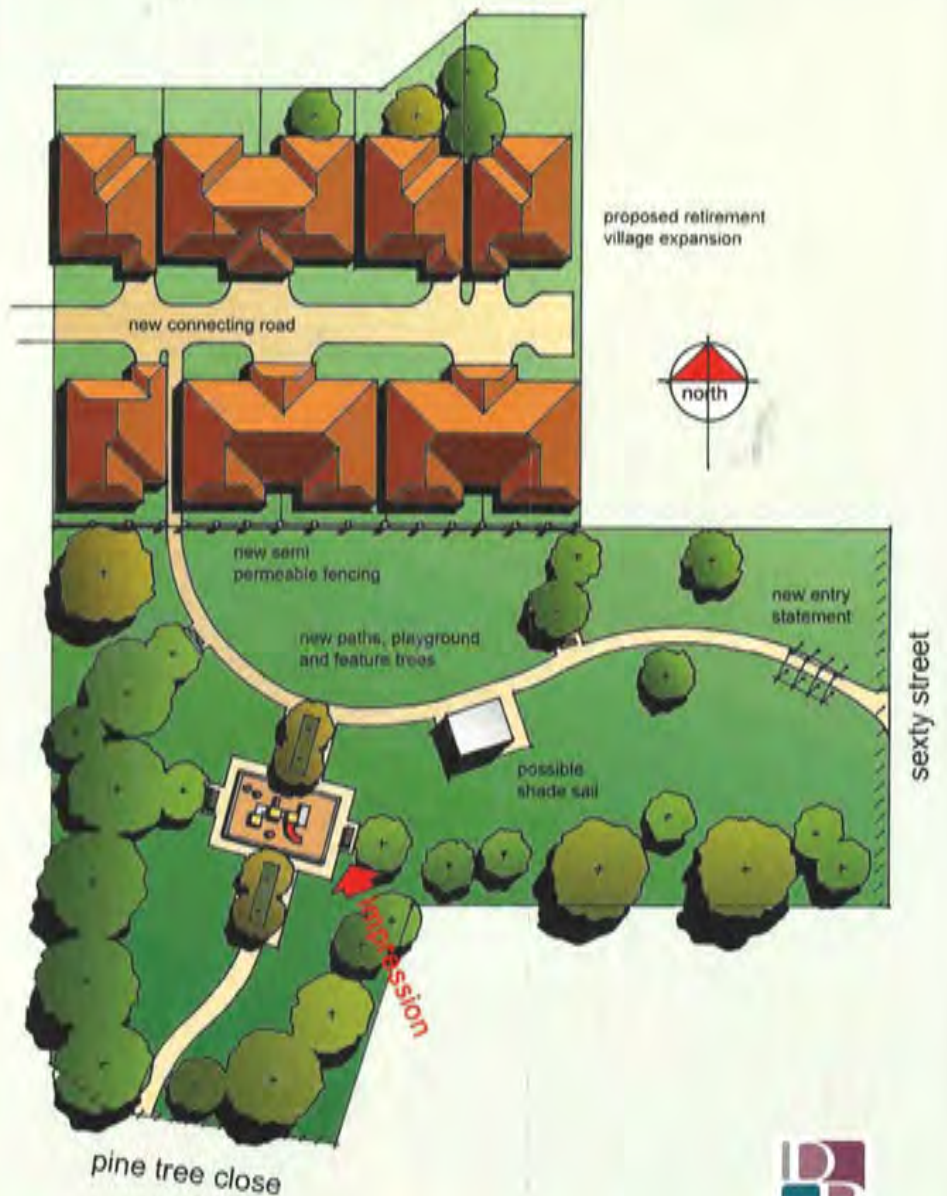
Early in 2010 there have been several further meetings with a number of local Councillors to discuss the details of the proposal and how it could be represented in a way that shows a real benefit to the local community. A new proposal has been prepared which has a significant emphasis on upgrading the existing public open space reserve, and this includes installing new pathways, playground equipment, shade and seating, and additional trees and other

landscaping features. This new plan has been provided to the Councillors that have been involved to date, and has also been provided to a number of surrounding landowners for their comment. It is intended that in the coming months a fresh proposal will be re-submitted to the City of Armadale, and we are hopeful that with the significant improvements that are proposed to the public park that the council will now support our proposal.

In the event that council is supportive of the proposal to rezone part of the public reserve to allow the residential expansion of the retirement village, there are still quite a number of processes to go through which could take 2 – 3 more years, or maybe longer. Ultimately the land will need to be purchased by the retirement village at market value, and as part of any agreement to purchase and develop the land it will also be necessary for the retirement village to undertake the majority of the upgrades within the remaining parkland area. An illustration of the proposed public open space upgrades, and the development of ten (10) additional housing units for the retirement village, is attached for information purposes.

■ Mr N. Hidding

Plan view & impression of possible Public Open Space use



MEMBERSHIP FORM



FAIR HAVEN
FREE REFORMED RETIREMENT VILLAGE

I / We would like to become a member of the Free Reformed Retirement Village Association as from ___ / ___ / ___ (Date)

I / We understand that the weekly contribution fees is \$7.

(Name)

(Church)

(Signature)

THE BOARD & STAFF

Chairman	Mr G.M. Spyker
Vice Chairman	Mr D. Pot
Secretary	Mrs R. Bosveld
Treasurer	Mrs J.E. Numan
Property Manager	Mr E. Terpstra
Hostel and Village Liaison	Mr H. Houweling

Ballast, Esther	Kitchen Hand
Bruning, Brenda	Carer
Byl, Janet	Cook
De Jager, Yvonne	Carer
Dijkstra, Amanda Jane	Kitchen Hand
Hart, Fiona	Kitchen Hand
Hart, Kathryn	Carer
Heuvink, Anne	Carer
Hidding, Elizabeth Alyce	Carer
Houweling, Andrea Elizabeth	Carer
Huizenga, Maria	Carer
Johnston, Leigh Ann	Carer
Kampman, Hanna Lee	Carer
Kleyn, Melissa	Registered Nurse
Niendieker, Alberdina H	Carer
Oosthuizen, Annie	Carer
Pitlo, Geessien M	Social Coordinator
Prapulenis, Lucy	Carer
Schiebaan, Margriet	Carer
Schoof, Janet	Social Coordinator
Swarts, Felicity	Carer
Terpstra, Merinda	Carer
Terpstra, Stephanie	Kitchen Hand
Van de Esschert, Sybel	Cook
Van der Laan, Jocelyn	Registered Nurse
Van der Lecq, Alice	Carer
Van der Linde, Jacomina	Registered Nurse
Van der Wal, Dorothy A	Care Manager
Van der Wal, Joslyn	Carer
Van Dyk, Janet J	Carer
Veldhuis, Dinah	Carer
Vermeulen, Tjakienna	Social Coordinator
Versluis, Christine	Social Coordinator
Versluis, John	Administrator
Veurink, Gerald	Security